



DISCOVERY OF CONQUES

Randonnée familiale de 2 jours -niveau facile-

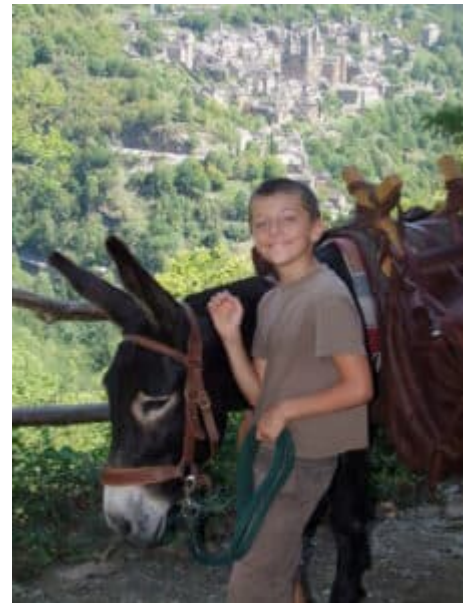
(Tarifs en fin de document)

Point de départ : Les Bréfinies

Jour 1 : Les Bréfinies → Conques: 12 km

The farm of the Ânes de Monédiès (breeding of donkeys of the Pyrenees) from where you will begin your hike is located in the hamlet of Bréfinies crossed by the Way of St Jacques (GR65). Situated in a green area, with the Brousse stream and its green pastures in the lower part and the small village with three typical Aveyron houses made of shale stone and roofs of lause in the upper part.

On the heights of Les Bréfinies is the plateau of Almont-Les-Junies that you will cross at the beginning of your walk and from which you will be able to admire an exceptional panorama on the Monts du Cantal and the Plateau de L'Aubrac. You will then plunge through beautiful chestnut groves to reach the hermitage of Fraysse from where you will return to the Fontaine du Pérrier to reach the Hameau des Angles and its unobstructed view on Conques.



From there you will go down a nice steep path to the bottom of the Dourdou valley, river that you will cross by the ancient pilgrims' bridge (also called "Roman bridge") dating from the Middle Ages to get back to Conques by the Charlemagne street.

Conques, the medieval town

The view of Conques is striking for those coming from the west. Nestled on the side of the wooded hill that appears before the walker on the opposite bank of the Dourdou, this magnificent medieval village exposes its tiers of slate roofs where the three towers of the Sainte

Les Ânes de Monédiès

Les Bréfinies, 12300 Almont les Junies

Tél. +33 (0)5 65 43 19 51 Portable +33(0)6 33 30 44 78

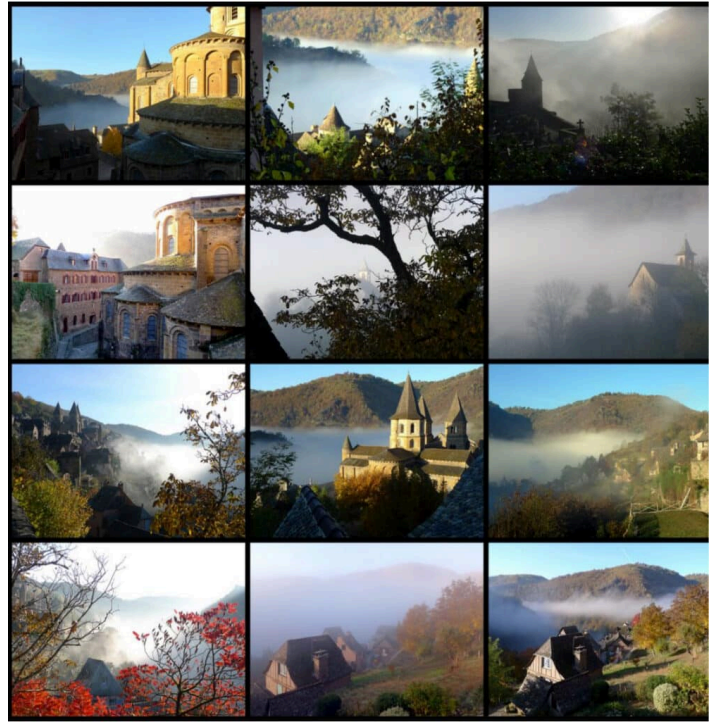
lesanes@monedies.fr

www.monedies.fr

Foy basilica dominate.

There is too much to see for everything to be described: the basilica of course and what we have been able to reconstitute of the cloister, but also the half-timbered facades in "X" filled with schist, the corbelled houses, the chapel of St. Roch (XVIth) on the rocky mound, the castle of Humières with its high tower and its mullioned windows, the Romanesque door of Vinzelle by which the pilgrims used to go back, a tower of the old enclosure, etc...

Recognized as one of the "Most Beautiful Villages of France", Conques collects titles of nobility. The abbey of this "Grand Site de MidiPyrénées" is classified as a UNESCO World Heritage Site.



Retour aux Bréfinies

Jour 2 : Conques → Les Bréfinies: 10,5 km



Lot Valley

You will return to Les Bréfinies by taking the Chemin de St Jacques (GR65) passing by the Chapelle Ste Foy de Conques from where you can ring the bell hoping for the response of the bells of the Abbey. You will then join the plateau by passing by the farms of Aujols and Lissoulière.

You will then follow a welcoming forest trail that winds through the woods and offers welcome shade on hot summer days. The end of your walk will take you to the lovely flowery hamlet of Clémenties from where you will reach Les Bréfinies.

This two-day hike does not involve any major difficulty.

Les Anes de Monédiès

Les Bréfinies, 12300 Almont les Junies

Tél. +33 (0)5 65 43 19 51 Portable +33(0)6 33 30 44 78

lesanes@monedies.fr

www.monedies.fr

DISCOVERY OF CONQUES

- Rando 2 jours -

(niveau facile)

For this hike, we propose you :

Les Anes de Monédiès

Les Bréfinies, 12300 Almont les Junies

Tél. +33 (0)5 65 43 19 51 Portable +33(0)6 33 30 44 78

lesanes@monedies.fr

www.monedies.fr

Rate

2 days and 1 night per person
"All-inclusive package
(Except drinks out of menu)

RANDO ORGANISEE

Draps et serviettes inclus

Location d'un âne - 2 jours

Cartes et topoguide

168 €

Formule 1

2 nuitées en Demi-pension

Adulte : 181 €

Enfant (-10 ans) : 149 €

Formule 2

2 nuitées en Pension complète

Adulte : 201 €

Enfant (-10 ans) : 170 €

*The rates are given for the high season and as an indication for a personalized estimate do not hesitate to fill in the information form on our site under the heading "online form for estimate".

Les Anes de Monédiès

Les Bréfinies, 12300 Almont les Junies

Tél. +33 (0)5 65 43 19 51 Portable +33(0)6 33 30 44 78

lesanes@monedies.fr

www.monedies.fr